

BYOxLink – How to guide

# Install the Intune on MacOS Ventura devices

This document explains how to install Intune on MacOS Ventura.

These instructions are suitable for devices using MacOS Ventura.

Please contact your school IT (ask for Josh cause he's the best 😊) if you experience any problems with this process.

## Step 1. Select the guest Wi-Fi network

- a. Select the EQQUEST Wi-Fi network.

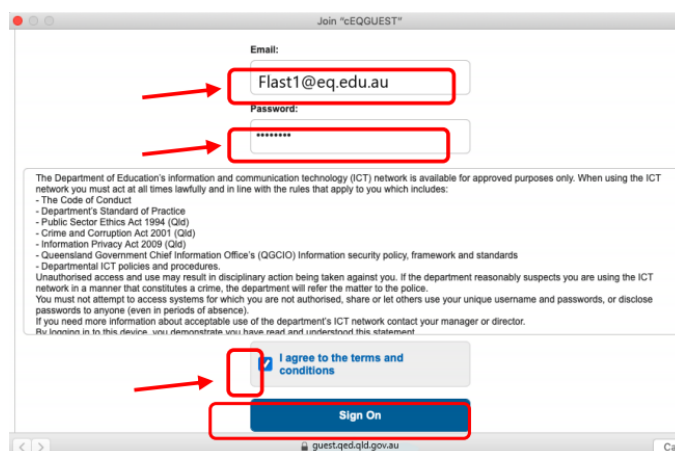


- b. A sign on page will be displayed.

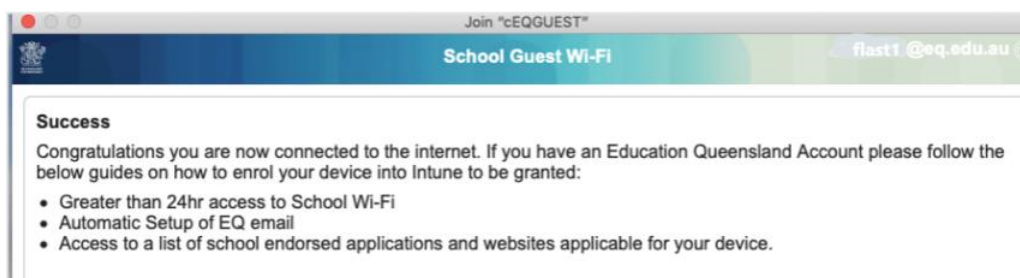


## Step 2. Sign on to the guest Wi-Fi network

- A Sign on page will be displayed.
- Enter your EQ email address and password.
- Read and accept the Acceptable Use Policy by ticking the box.
- Select Sign On.

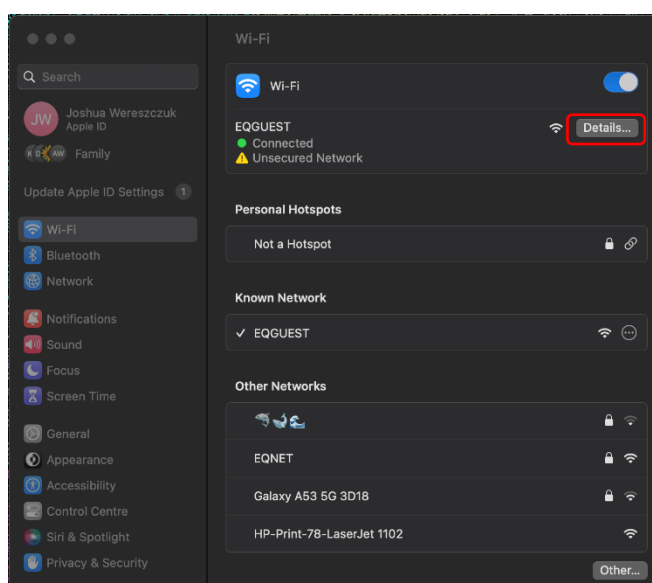


- A success screen will display, close the window.

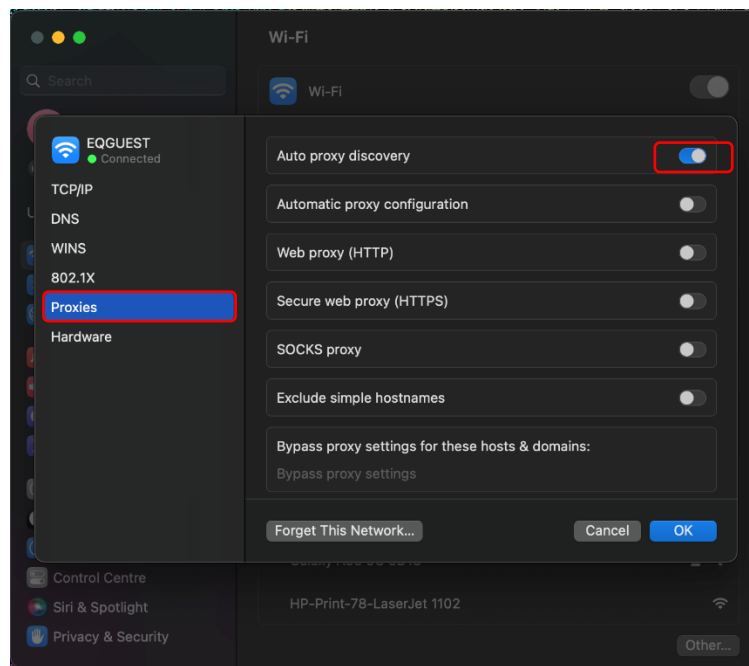


## Step 3. Change Wi-Fi Proxy Settings

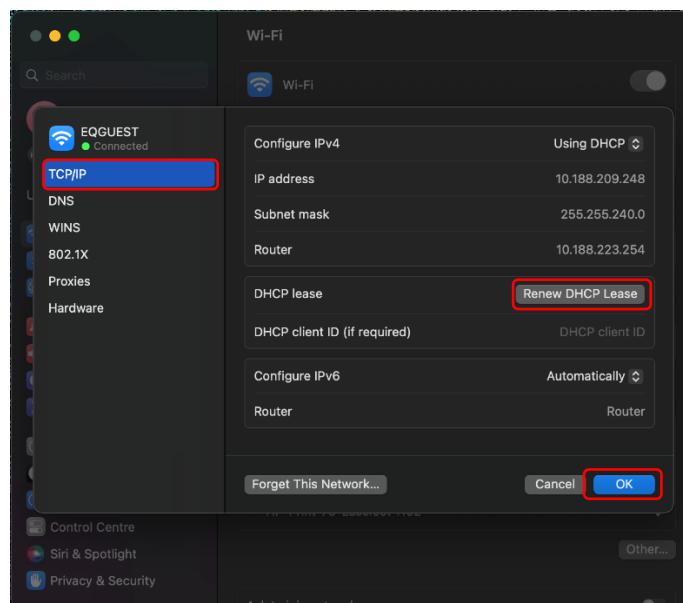
- Select the Wi-Fi icon in the menu bar at the top of the screen.
- Select **Open Network Preferences**.
- Select **Details...**



- d. Select Proxies and then select the Auto Proxy Discovery checkbox.



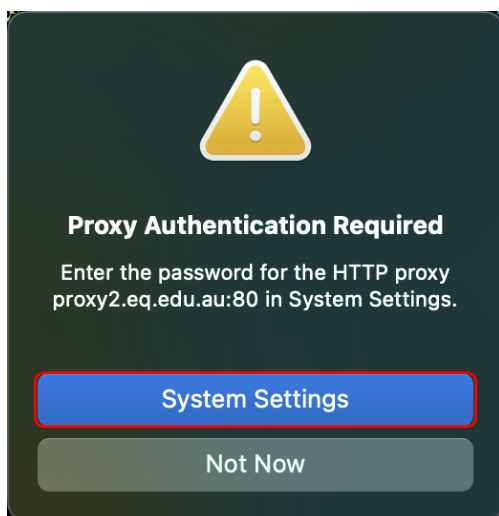
- e. Select **TCP/IP** and then **Renew DHCP Lease** on the right hand side of the screen.



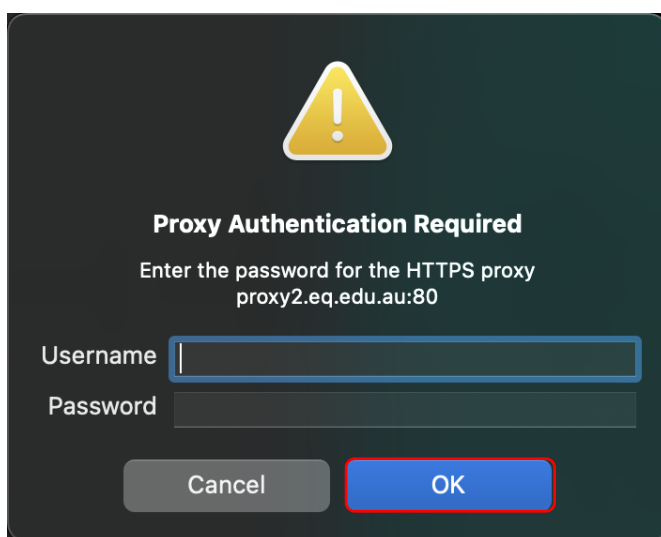
- f. Select **OK**.
- g. You will be prompted for further credentials when your device tries to access the internet. Open the internet browser, **Safari**.



h. Select **System Preferences**



i. Enter your username and password given to you by your school contact. Select **OK**.



- j. If you time out or close the browser, you will need to go through steps 'a' to 'c' again.
- k. In your internet browser, check your internet is working. If your internet is not working, please contact your school IT support for assistance.



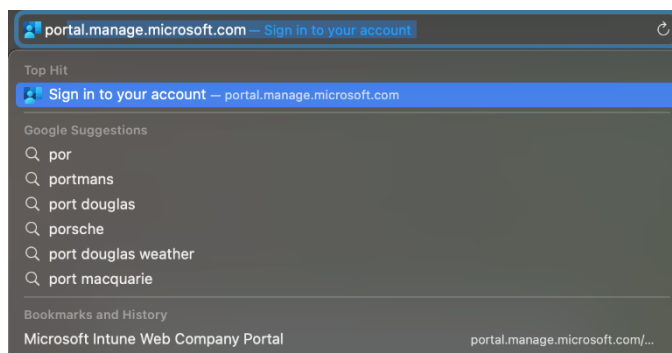
## Step 4. Next steps

To access school email, learning applications, printers and shared network drives and applications, you will need to enrol your device into Intune.

## How to install Intune

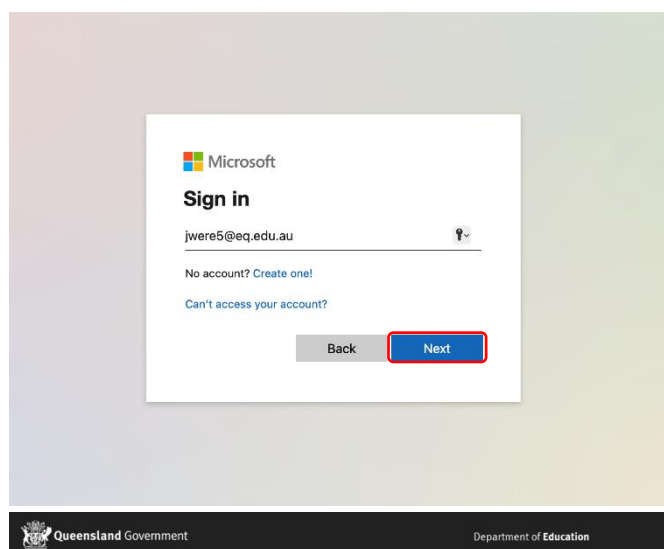
### Step 1:

To start, connect to the internet, open **Safari** and type in **portal.manage.microsoft.com**



### Step 2:

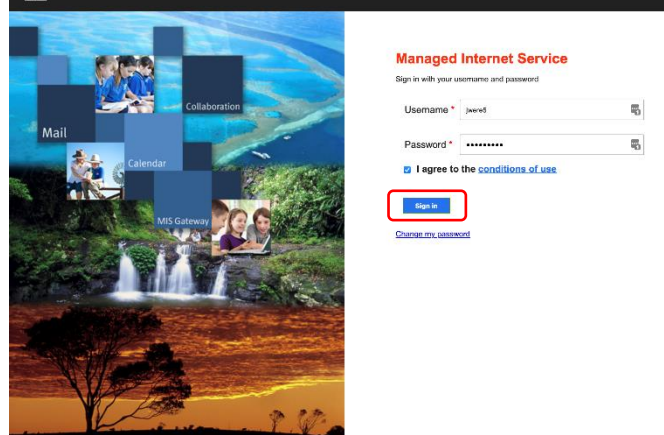
Enter the **@eq.edu.au** email address you were provided by your school and select **Next**.



### Step 3:

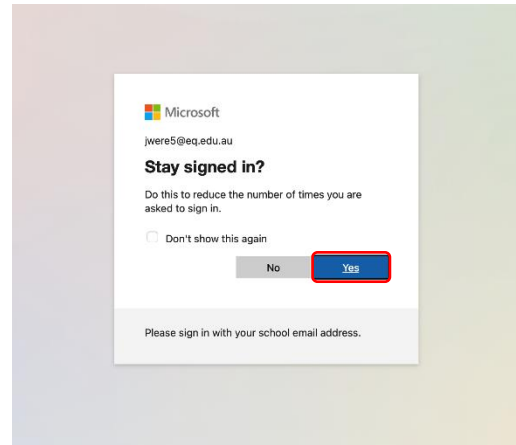
Your username may auto fill or you will need to enter the school username and password you were provided.

Then accept the terms and conditions and select **Sign in**.

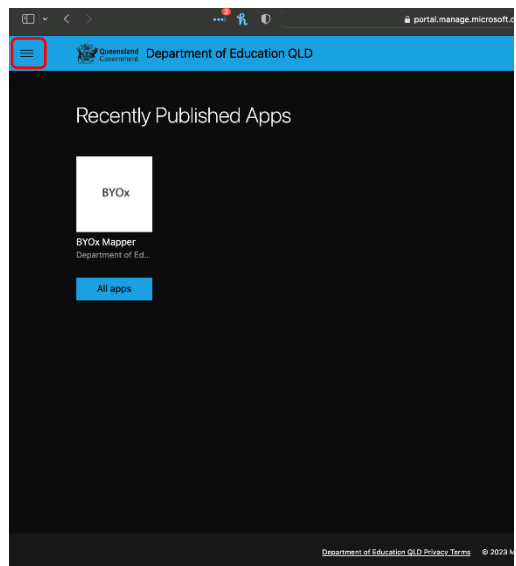


**Step 4:**

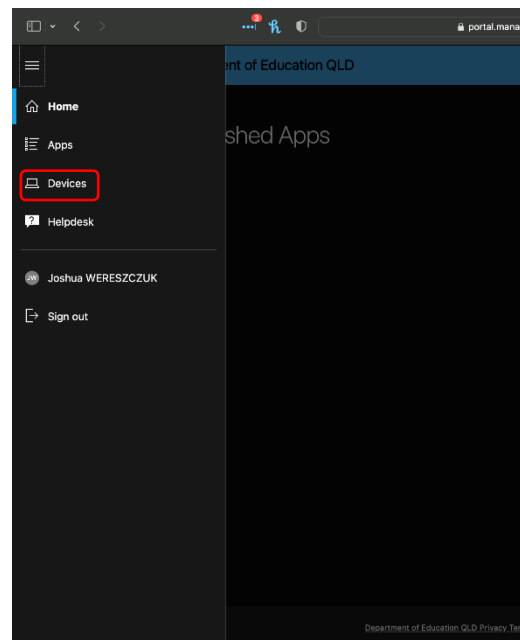
A prompt will pop up asking if you want to stay signed in, select **Yes**.

**Step 5:**

The Intune company portal will open, select the **Hamburger Menu**.

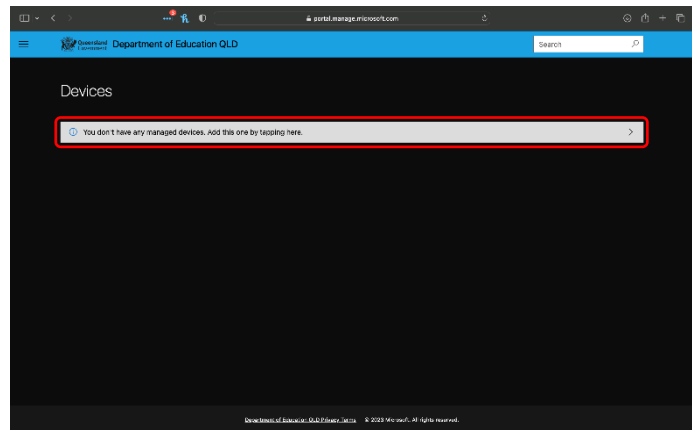
**Step 6:**

Select **Devices**.

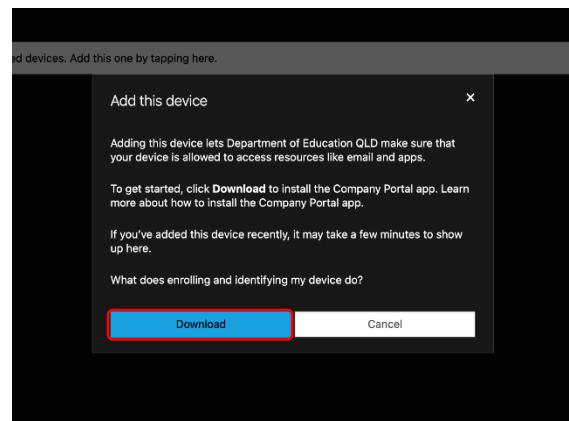


**Step 7:**

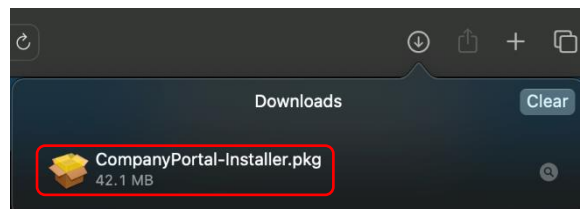
Then, select the option that appears. This will either be **You don't have any managed devices** or **Tap now to tell us which device you are using or add a new device**.

**Step 8:**

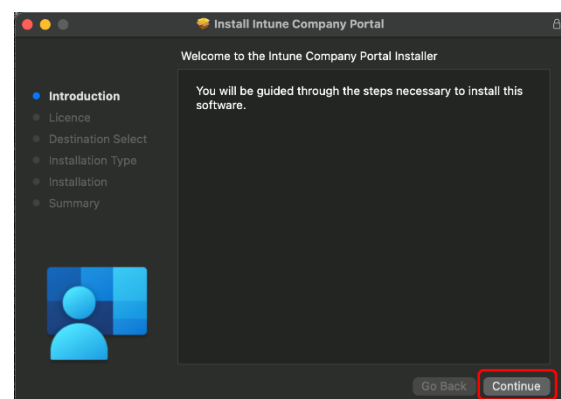
Please select **Download**. It may take a few seconds to complete.

**Step 9:**

Select the Downloads button at the top on Safari. Open the **CompanyPortal-Installer**.

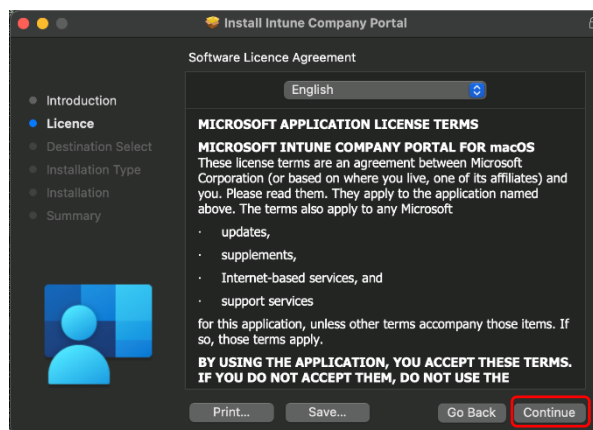
**Step 10:**

Please select **Continue**.

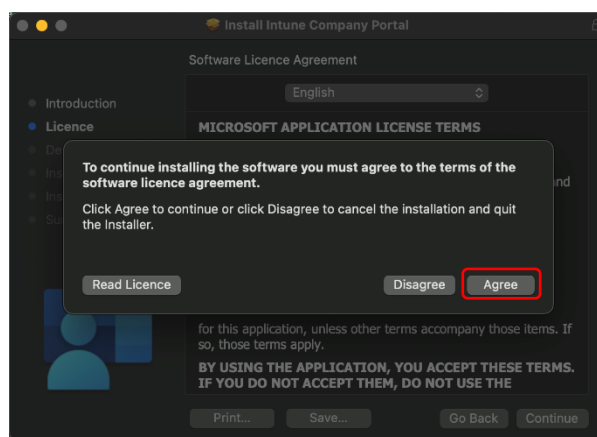


**Step 11:**

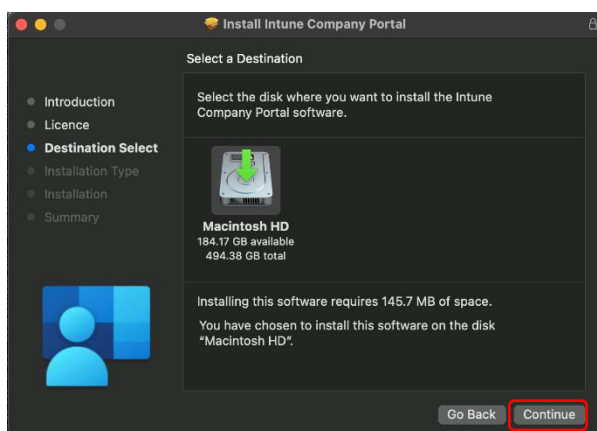
Please read the license terms and then select **Continue**.

**Step 12:**

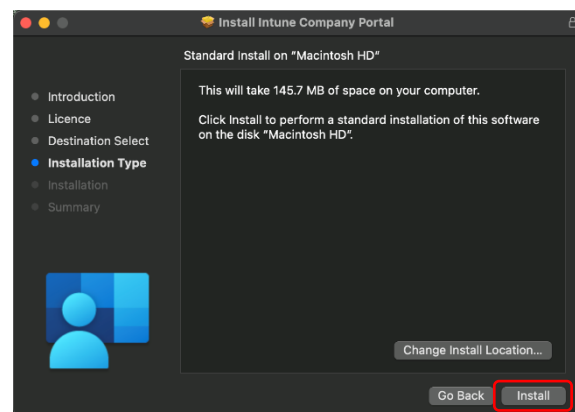
Select **Agree** to accept the license terms in the pop-up window.

**Step 13:**

Next, select **Continue**.

**Step 14:**

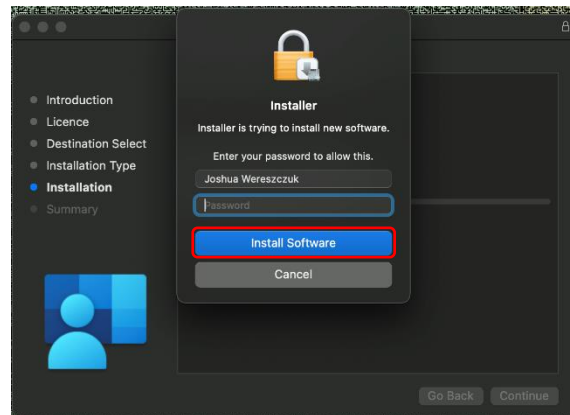
Next, select **Install**.



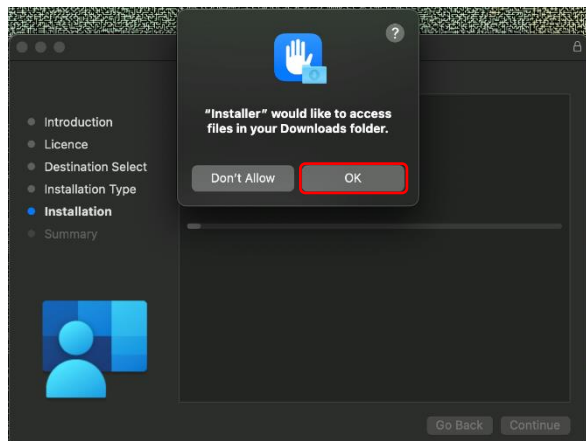


**Step 15:**

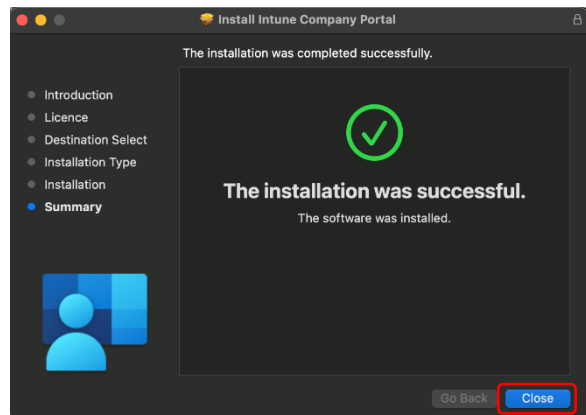
Please enter your username, password of your device and select **Install Software**.

**Step 16:**

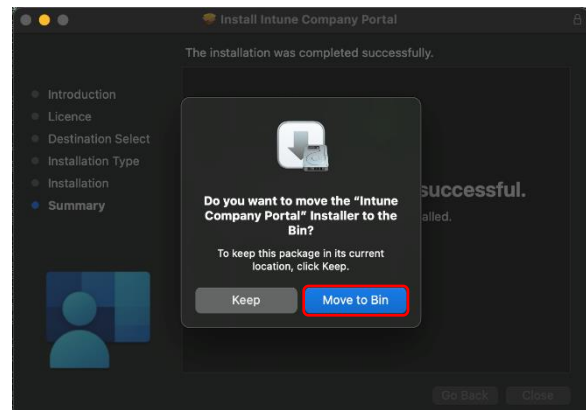
If prompted with a access prompt, select **OK**.

**Step 17:**

When the installation has finished, select **Close**.

**Step 18:**

Once the program has completed installing, please select **Move to Trash** or **Bin** option.

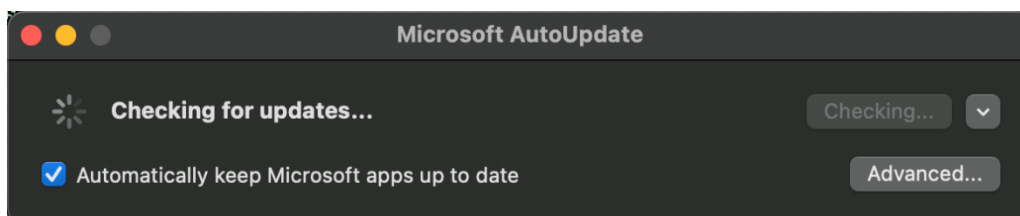


**Step 19:**

The Microsoft auto update will appear. Select **Install** if there are updates waiting. Otherwise, select **OK**.

You may need to repeat this step a few times.

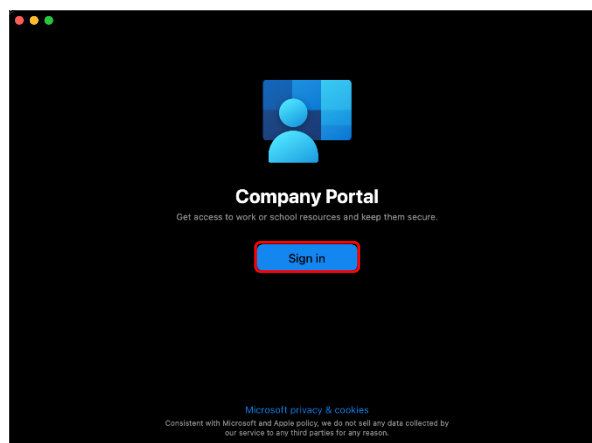
Once there are no more updates, you can close the Microsoft Auto Update program.

**Step 20:**

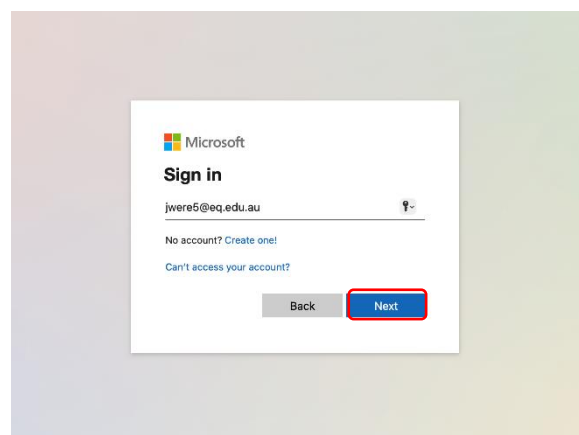
Next, you need to enrol into Intune. Select **Launchpad** and then select the **Company Portal** app.

**Step 21:**

Then, select **Sign In**.

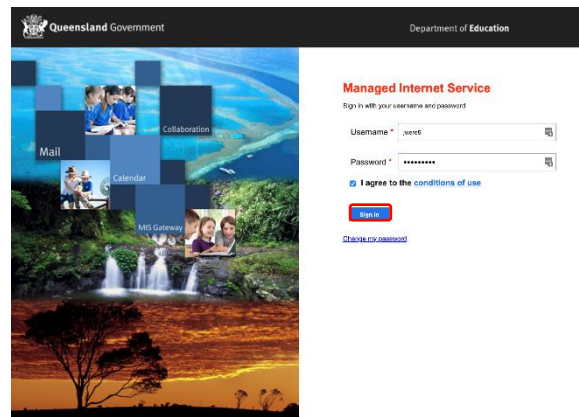
**Step 22:**

If presented with the Microsoft Sign in screen, enter your supplied EQ email address. Then, select **Next**.



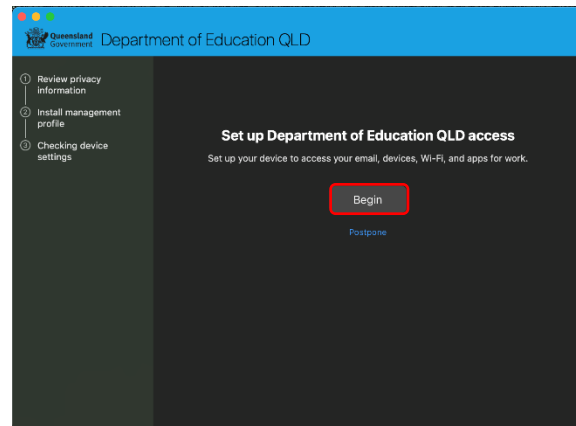
**Step 23:**

Enter the username, password and accept the terms and conditions. Then, select **Sign In**.



**Step 24:**

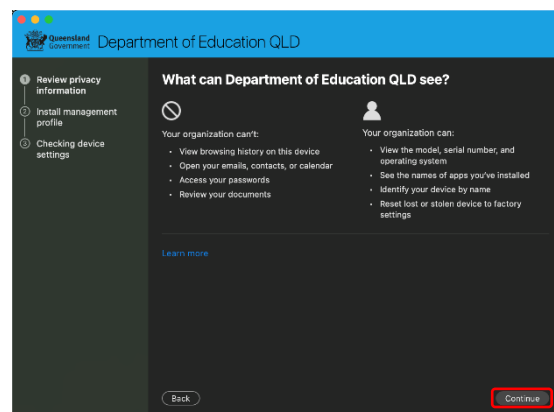
Then, select **Begin**.



**Step 25:**

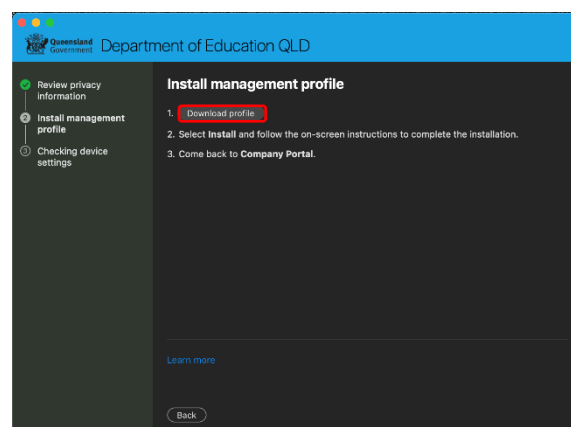
This explains what your school IT administrator can and cannot see on your Mac device.

Select **Continue**.



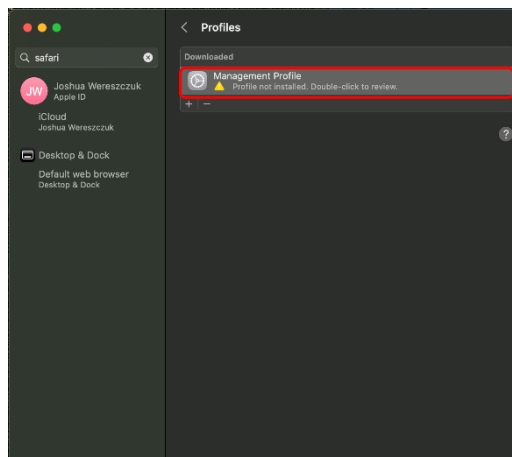
**Step 26:**

To install the management profile select the **Download profile** button.

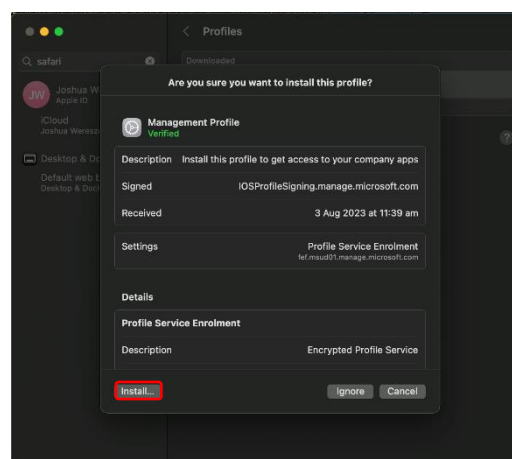


**Step 27:**

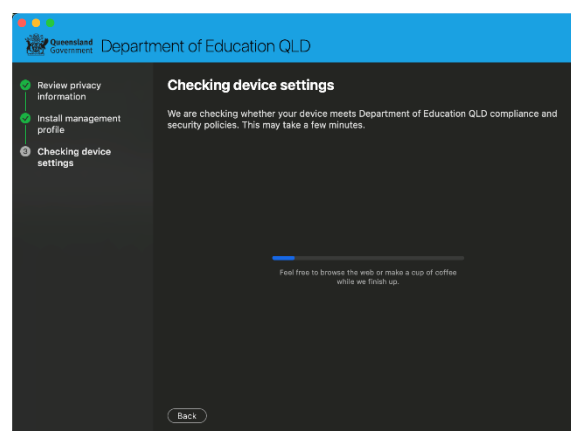
After a couple of seconds a window with your profiles should pop up. Select the **Management Profile**.

**Step 28:**

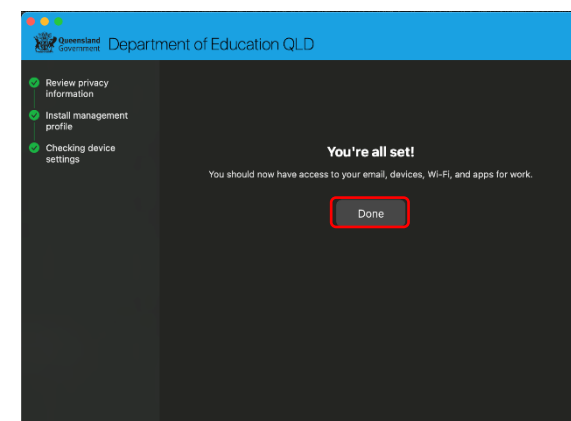
From here, select the **Install...** button to install the profile. Go back to the opened Installer and wait for the window to change.

**Step 29:**

**Checking device settings** can take quite a while. Please just let it do its thing and keep it connected to the internet.

**Step 30:**

Finally, select **Done**. If everything went smoothly you should be connected to the internet. You should also restart the computer to ensure the system password doesn't need to be updated.



**Note:**

If the system **Password/Fingerprint/Face** won't work try restarting the computer. This might prompt you to change your system password.

